

National Wheat Outlook

October 2021

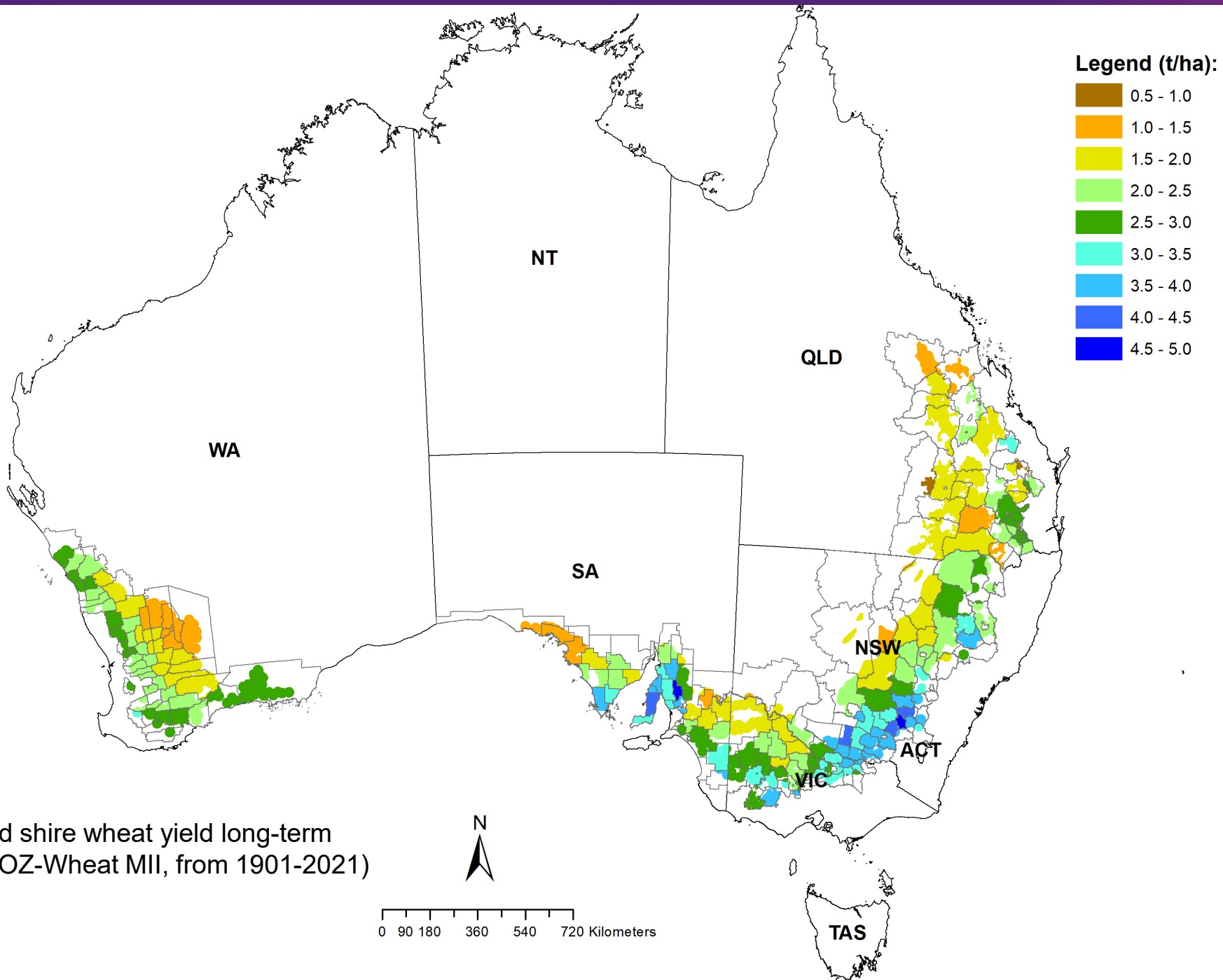
Contact

Dr Andries Potgieter

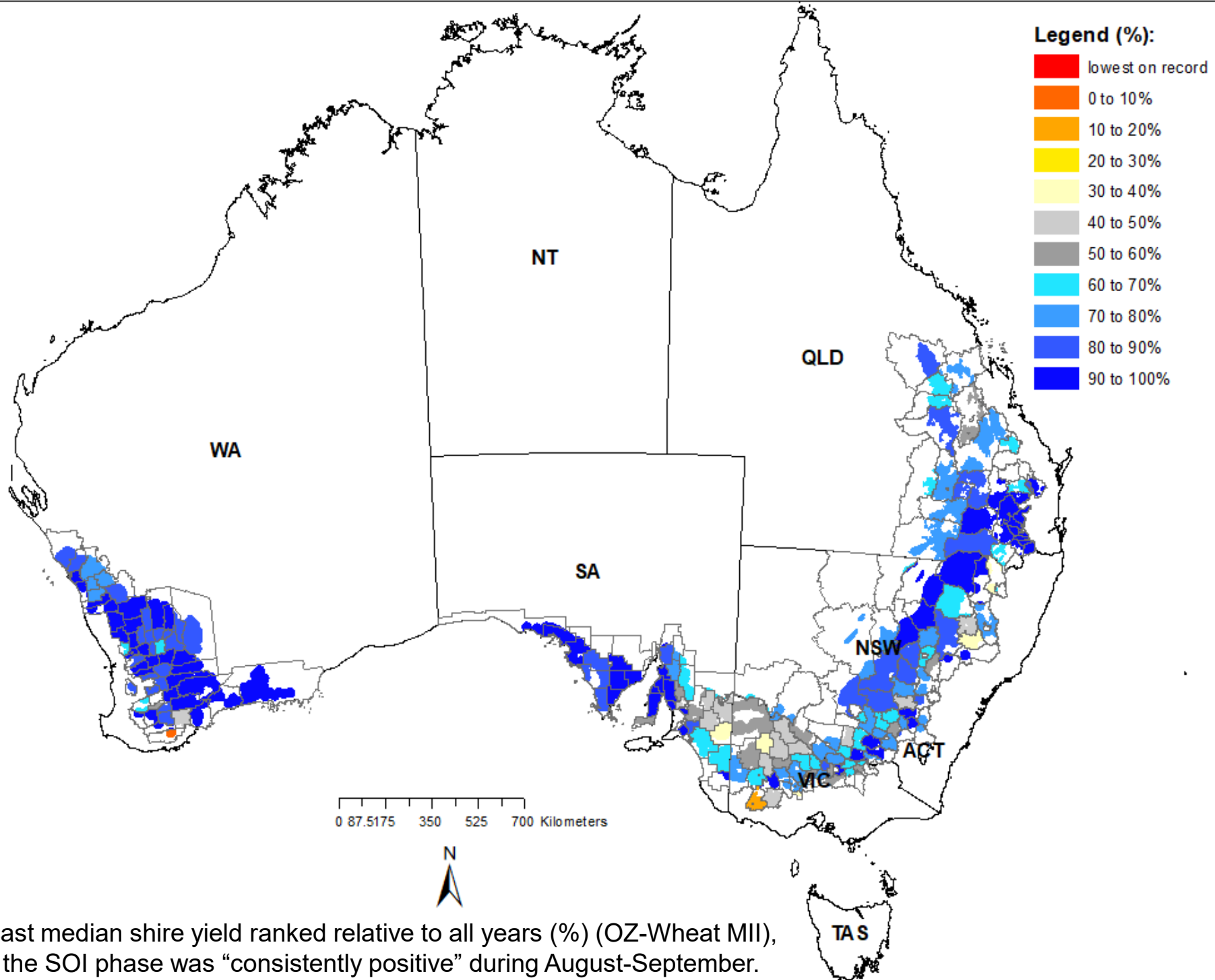
Centre for Crop Science
Queensland Alliance for Agriculture and Food Innovation

E: a.potgieter@uq.edu.au

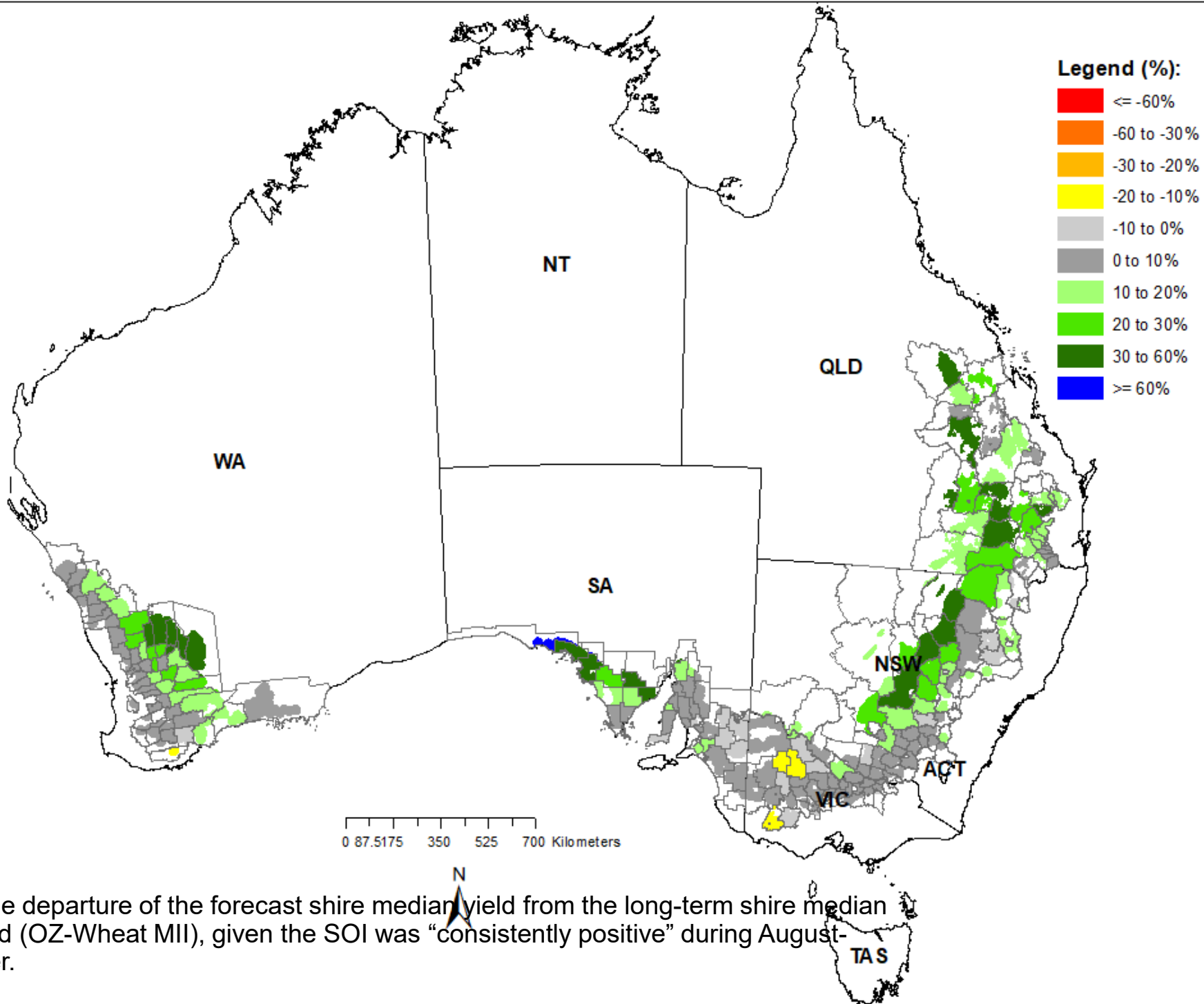
T: +61 7 535 15085



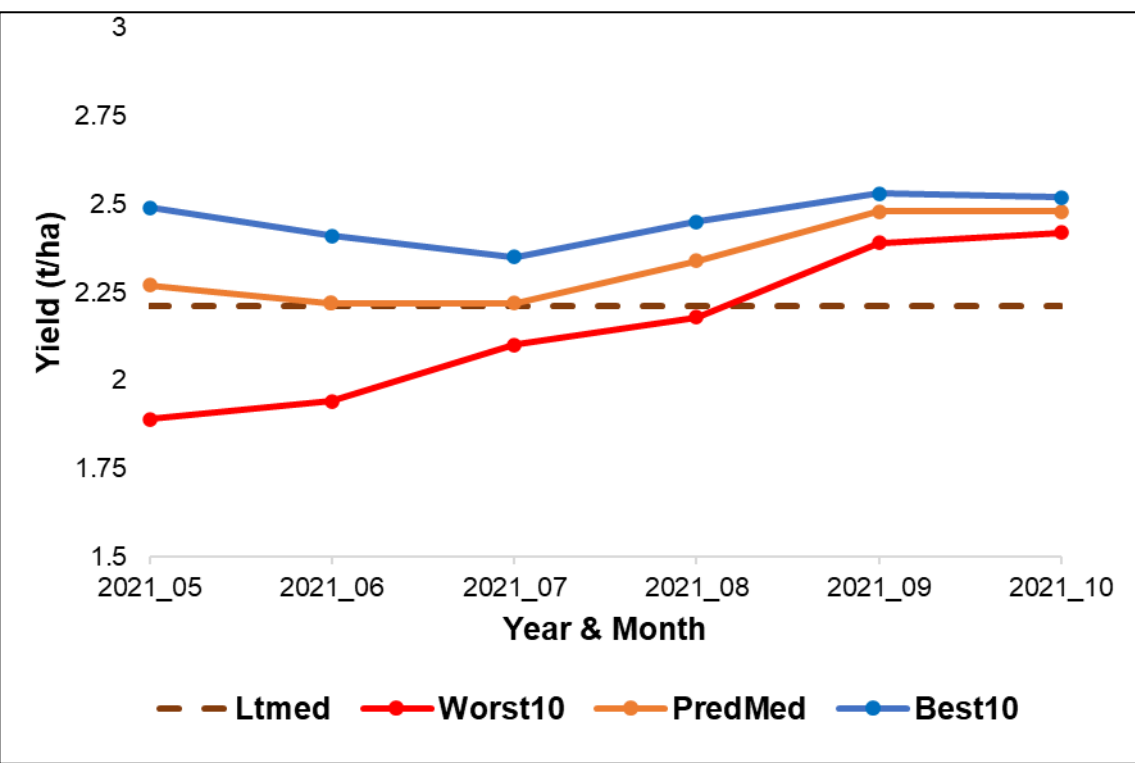
Simulated shire wheat yield long-term median (OZ-Wheat MII, from 1901-2021)



Forecast median shire yield ranked relative to all years (%) (OZ-Wheat MII), given the SOI phase was “consistently positive” during August-September.



Percentage departure of the forecast shire median yield from the long-term shire median wheat yield (OZ-Wheat MII), given the SOI was "consistently positive" during August-September.



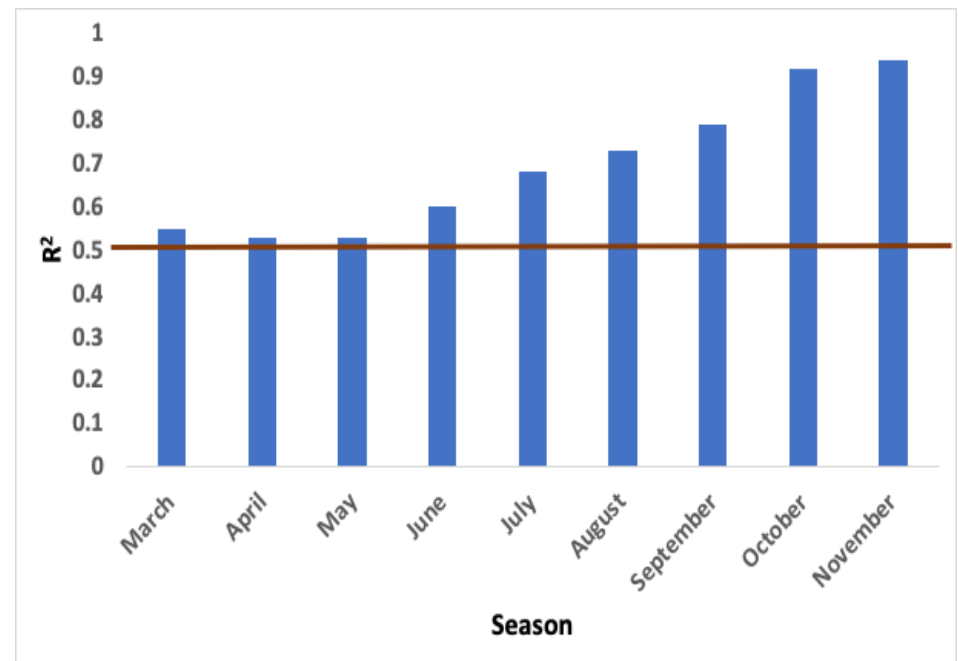
State and National wheat outlook distribution 1st October 2021

Worst10 - forecast 10th percentile
 Best10 - forecast 90th percentile
 PredMed - Forecast median
 Ltmed - Long-term median yield; DFY% - Departure of forecast median from long-term median yield as a percentage.
 Pred% - Forecast median shire yield ranked relative to all years (%)

Variability explain (R^2) and lead time of forecast before harvest in December. Based on the last 30-years of actual ABS data vs forecast median yield from Oz-Wheat MII.

National & State level summary

Region	PredMed	Ltmed	Pred%	DFY%
AUS	2.48	2.21	99%	12
NSW	2.94	2.52	93%	17
QLD	2.29	1.91	91%	20
SA	2.77	2.49	90%	11
VIC	2.48	2.47	51%	0
WA	2.21	1.98	99%	12



OZ-Wheat MII: regional scale crop simulation model developed by UQ QAAFI.

Descriptive note:

The seasonal wheat outlook is based on the integration of (i) a simple agro-climatic wheat stress index model (Oz-Wheat MII) (i.e. Bare fallow routine - Ritchie, 1972; Wheat stress index model adapted from - Fitzpatrick and Nix, 1969; Nix and Fitzpatrick, 1969), which is sensitive to water deficit or excess during the growing season, (ii) actual climate data up to the forecasting date and (iii) projected climate data after that date. These projected data are drawn from historical analogue years based on similarity to the prevailing phase of the Southern Oscillation Index (SOI) (Stone et al., 1996). The Oz-Wheat model is run from 1 October the year before sowing in order to account for the influence of the summer fallow on starting soil moisture conditions. The model input parameters for each shire (i.e. potential available water content, planting rain & stress index period) have been selected based on the best fit when calibrated against actual shire wheat yields from Australian Bureau of Statistics (ABS) for the period 1976 – 2000, 2005, 2010 & 2015 (MII). Cross validated spatial correlation when predicting the shire wheat yields for the 2000 season (MI) was 0.8 across all main wheat producing shires in Australia (Potgieter et. al., 2006). For the updated MII 75% of the 237 shire have $R^2 > 0.60$.